

INTRODUCING THE CHM PRECISION SHEETER

DISTRIBUTED BY **COLTER & PETERSON**



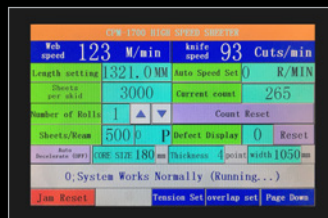
Headquartered in West Caldwell, NJ, Colter & Peterson has evolved over the past eighty-five years into an international organization that manufactures PRISM® and SABER® paper cutters, MICROCUT® computers and other finishing equipment as well as offers parts, service and used equipment.

CHM is the leading manufacturer of sheeters in Asia. They are currently producing over three-hundred machines annually. Recently CHM has built a new manufacturing complex outside of Shenzhen, China with a half million square ft. of capacity. Colter & Peterson and CHM are working together to install the most efficient synchro fly twin knife sheeters available today.

FEATURING:



Shaftless back stands with USA made Montalvo web tension pneumatic brake units. Easy to replace friction pads and enclosed cooling fan.



10" Siemens touchscreen controls to set and display sheet size, count, cut speed, delivery overlap etc. Works in conjunction with Siemens PLC and Siemens Servo synchro cutting motor control unit to adjust twin knife cut size.



Three Tidland Class II Slitting units with double sided anvils. Split anvils and Class III units are also available for heavy board slitting.



Individual Montalvo programmable set point closed loop web tension control for each roll. Shows actual web tension continuously for each layer.

INTRODUCING THE CHM PRECISION SHEETER

Features:

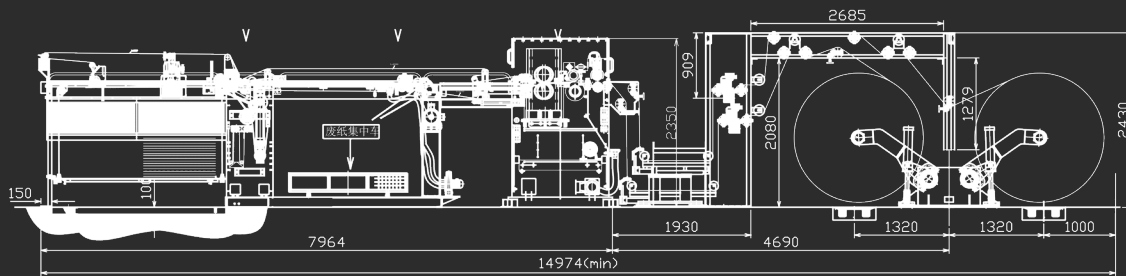
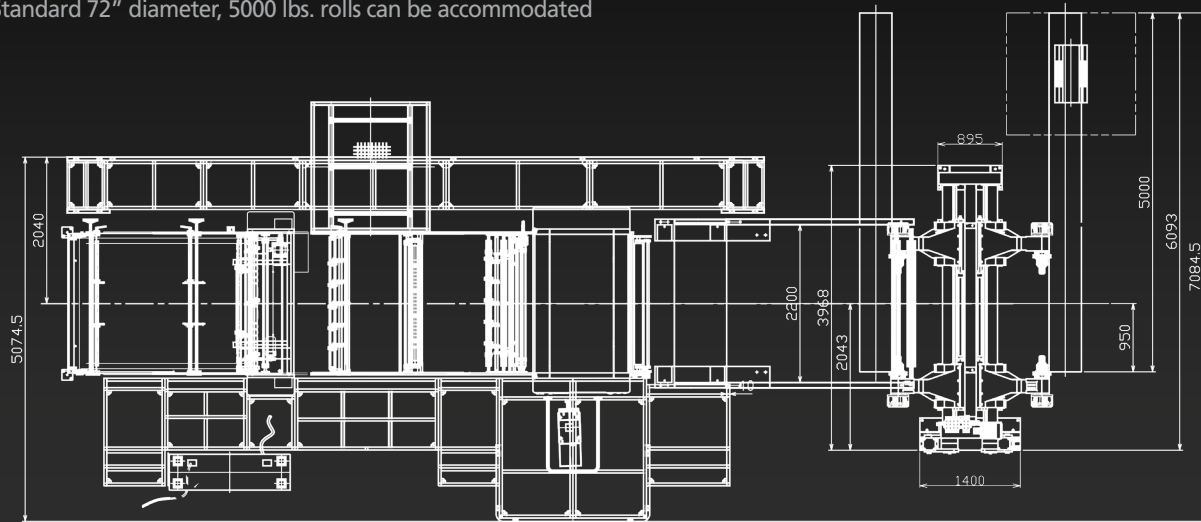
- Roll stand taper chucks accept 8" -12" & 3" -6" cores
- Infeed section with 4" rollers, 6" roller option for heavy board
- Remotely adjustable motorized decurl for each web
- Remotely adjustable web left-right position
- Anti-static control bars fitted as standard
- Vacuum brake for sheet to control overlap & remove dust
- Reject gate to aid setup, with waste collection bin
- Two sets of carbide knives
- Roll skates with tracks provided
- Cat walk surrounding entire machine

Specifications:

- Cutting accuracy of +/- .020"
- Maximum cutting speed of 1,000 ft/minute or 300 cuts/minute (subject to density)
- 55" and 67" machine widths available
- 18" to 82" adjustable sheet lengths available
- Capable to cut paper and board from 100gsm to 1000gsm
- Standard 51" high skids can be piled
- Standard 72" diameter, 5000 lbs. rolls can be accommodated

Optional Features:

- Centrifugal locking removable chucks
- Coast dual web steering guide with auto-center
- Up to 72" high skids can be piled
- Up to 84" diameter, 6,000 lbs. rolls can be accommodated
- Pile removal from side of delivery can be accommodated using our swinging catwalk



Specifications subject to change without notice.



For more information about this sheeter:
1.800.932.0780 or visit papercutters.com/sheeter

PaperCutters.com
 POWERED BY COLTER & PETERSON